

omer ibrahim
SAMPLE PORTFOLIO

AUGUST 2025

First Class MSA Graduate
from the North-west



polytown:

THE *LIVING*
FACTORY

As technological progress accelerates, we move from one finite resource to another. Whilst this use of our environment is in some ways inevitable, as architects, we look for less invasive strategies of powering a sustainable future. This particular project examined the extraction of lithium, and looked to celebrate the existing industrial heritage of a Cornish tin mine, whilst providing a community driven piece of infrastructure to last long into an uncertain future.

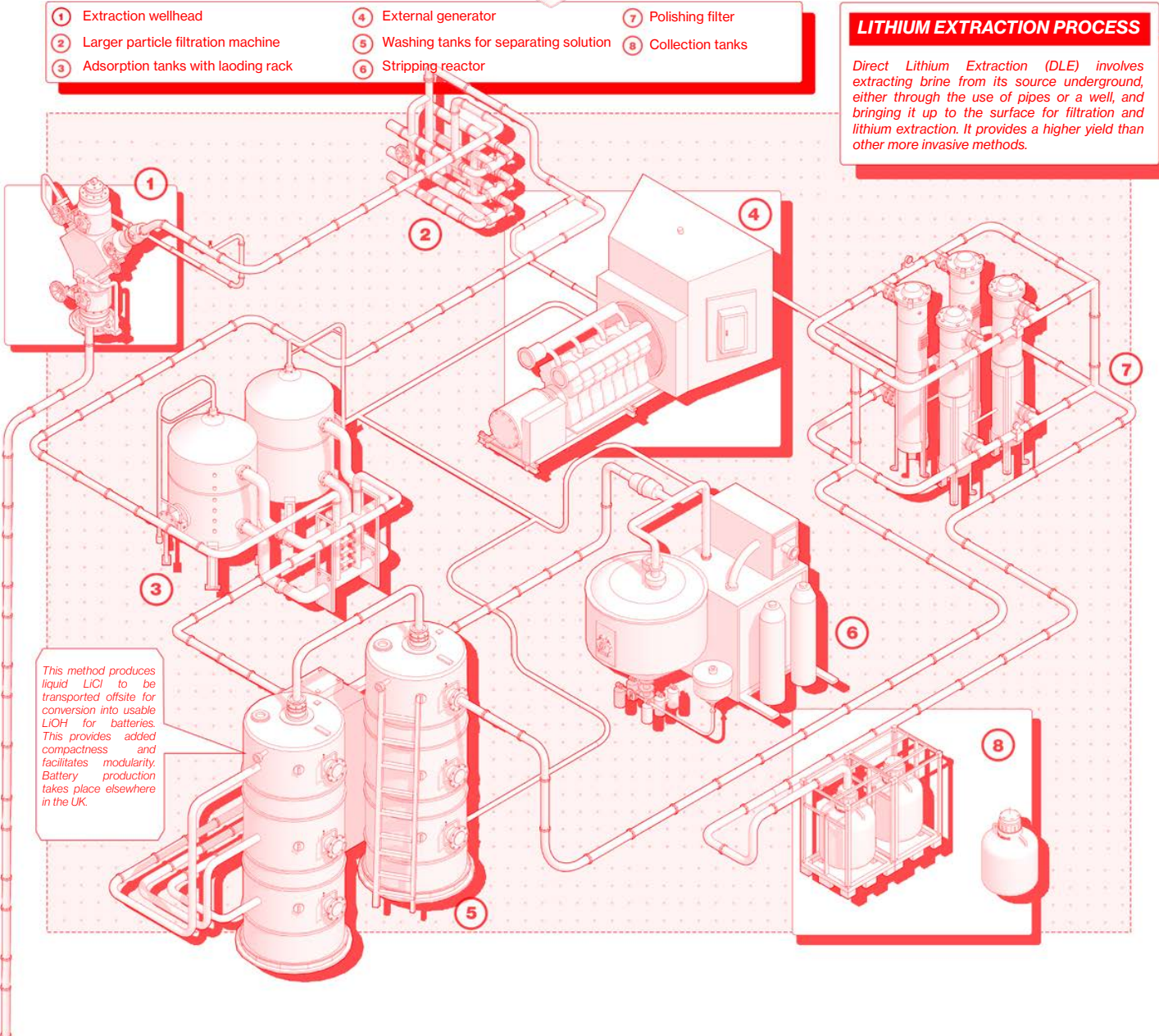
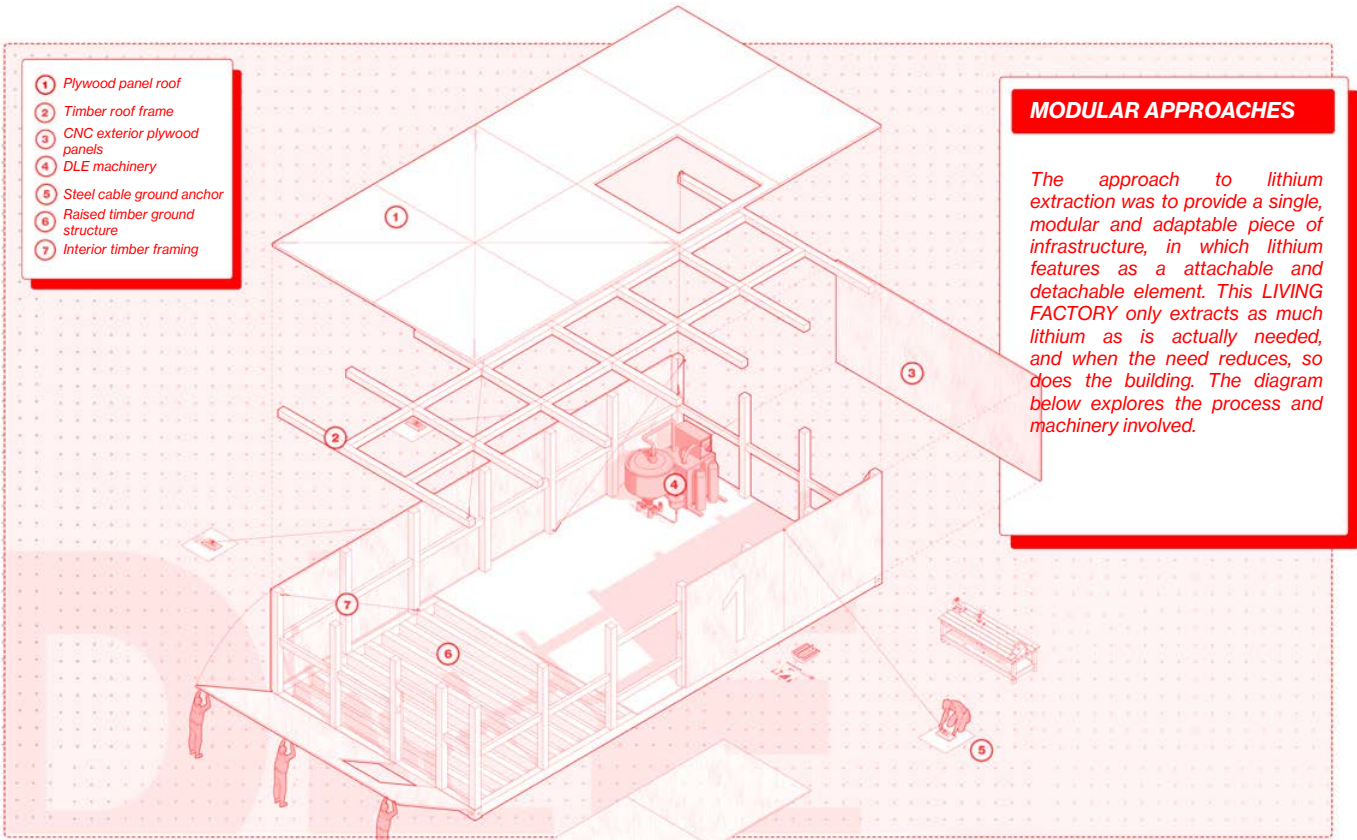


Daylight
Visualizer



MODULAR APPROACHES TO LITHIUM AND GROWTH

The arrangement of internal spaces is efficient and focuses primarily on circulation and public/private space relationships, with lithium extraction being a modular feature on the lower industry level.. Putting the social space at the heart of the building encourages collaboration and discussion, whilst the two parallel corridors meet in the middle where natural cross ventilation can occur. The building itself acts as a medium between landscape and industry and between settlement and factory, with efficient and smooth typological transitions being at the heart of the programme.

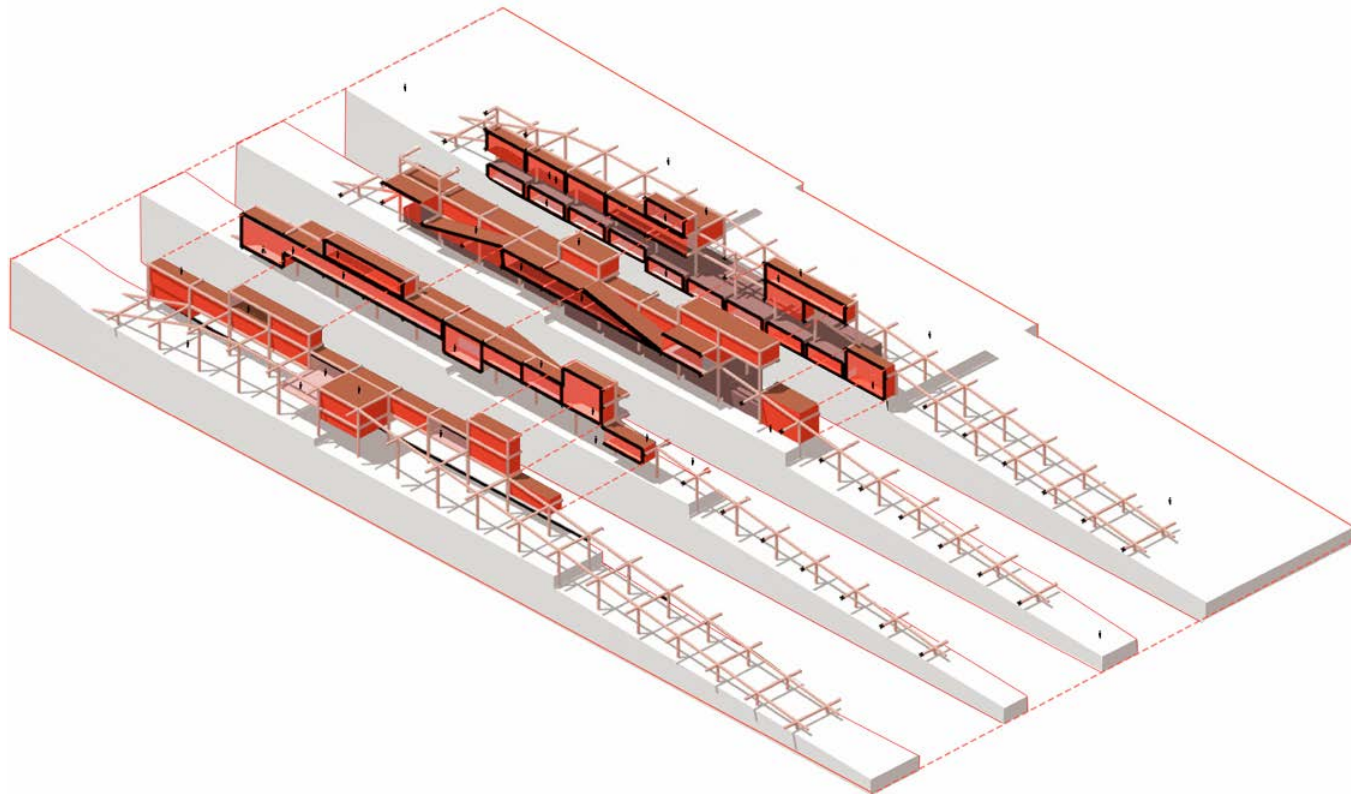


order and disruption:

CAN THE BUILDING FABRIC EXPAND TO GIVE AGENCY TO LOCAL COMMUNITIES?



UNLOCKING THE POTENTIAL OF THE STRUCTURAL GRID



key elements of
verticality

The structural grid was defined by the dimensions of one lithium unit, providing a shell for the depot hub below. Through a relatively sketchy attempt at a perspective roof plan, I experimented with the potential of the roof space, using growth as a theme throughout to establish what kind of activities might take place on the roof space. Here, the roof begins to become the heart of the scheme, creating a clear hierarchy of what is lithium space, admin space and public or social space. This roof space was to be used for the restoration of wildlife, and social space.



is a lithium
future realistic
in a finite
world?

The material palette of the interior spaces aimed to celebrate local Cornish landscapes, whilst making slight nods to the highly industrial facility below.

SECTIONAL DETAIL

Roof

- 950mm steel railing
- 150mm soil substrate
- 50mm drainage layer
- 18mm OSB
- Damp proof membrane
- 150mm mineral wool insulation
- 18mm plywood
- 400mm timber primary structure
- 200x400mm steel brackets w/ steel fixings
- Aluminium roof parapet
- Aluminium gutter

Wall

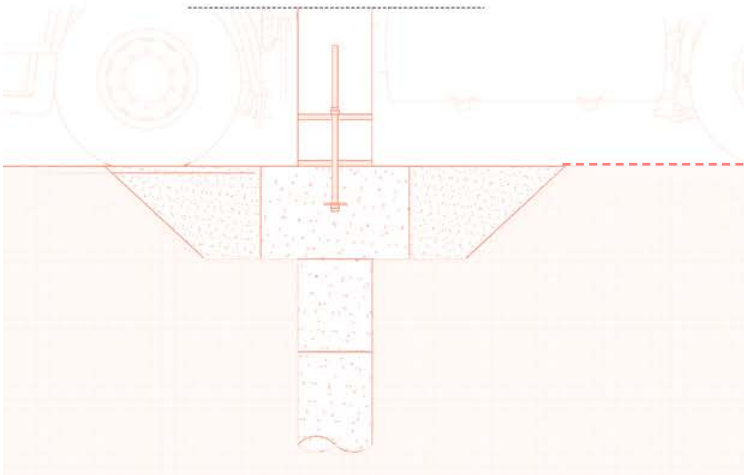
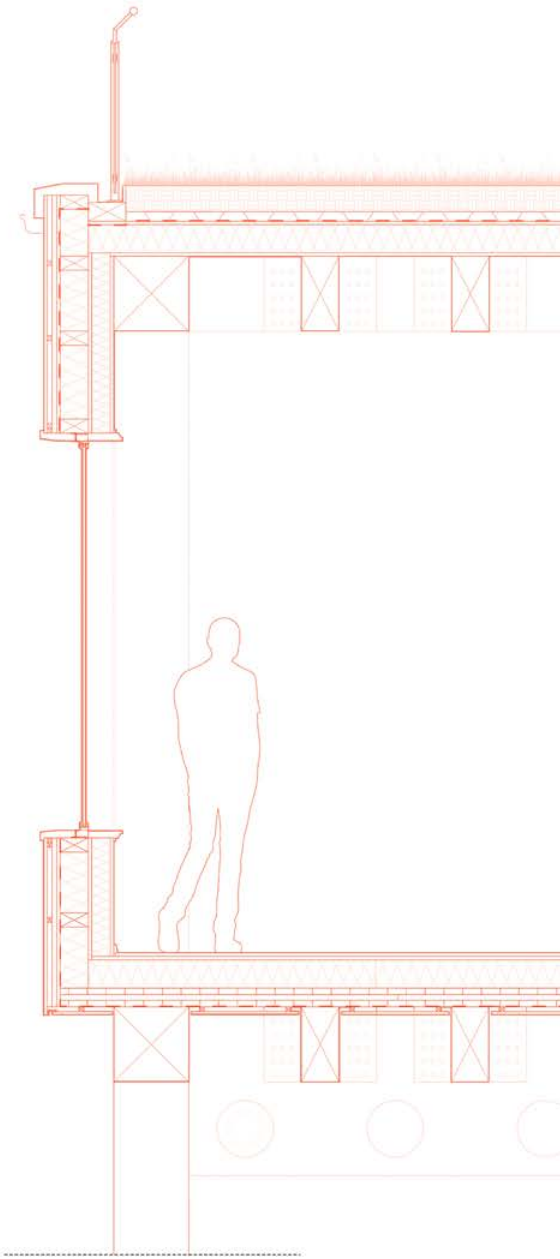
- 18mm plywood
- 100mm continuous insulation
- 18mm OSB
- 150mm CLT structure w/ insulation infill
- 25x25mm Vertical battens
- 25x25mm Horizontal battens
- 18mm shou sugi ban cladding
- Aluminium window framing
- 24mm Double glazing

Interior floor

- 18mm laminate floor finish
- 18mm cork underlayment
- 1150mm mineral wool insulation
- 100mm CLT slab
- Damp proof membrane
- 25x25mm battens
- 18mm shou sugi ban cladding
- 400mm timber primary structure
- 200x400mm steel brackets w/ steel fixings
- 900mm steel beam, fitted with services

Ground

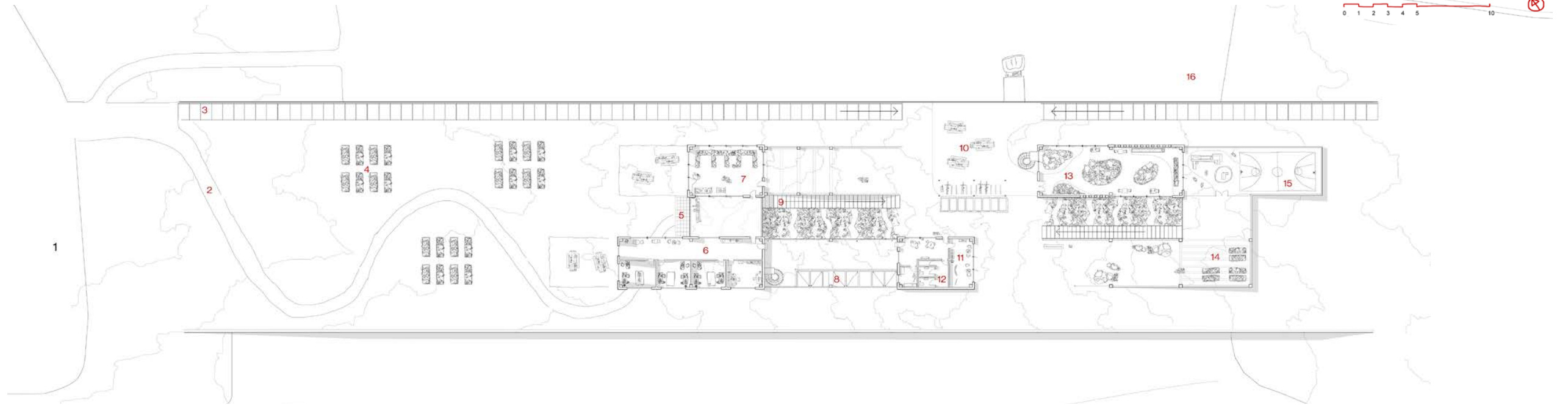
- 400mm wide timber column
- 400x400x280mm stainless steel post base
- 500x800x800mm concrete footing
- 1000mm deep concrete foundation



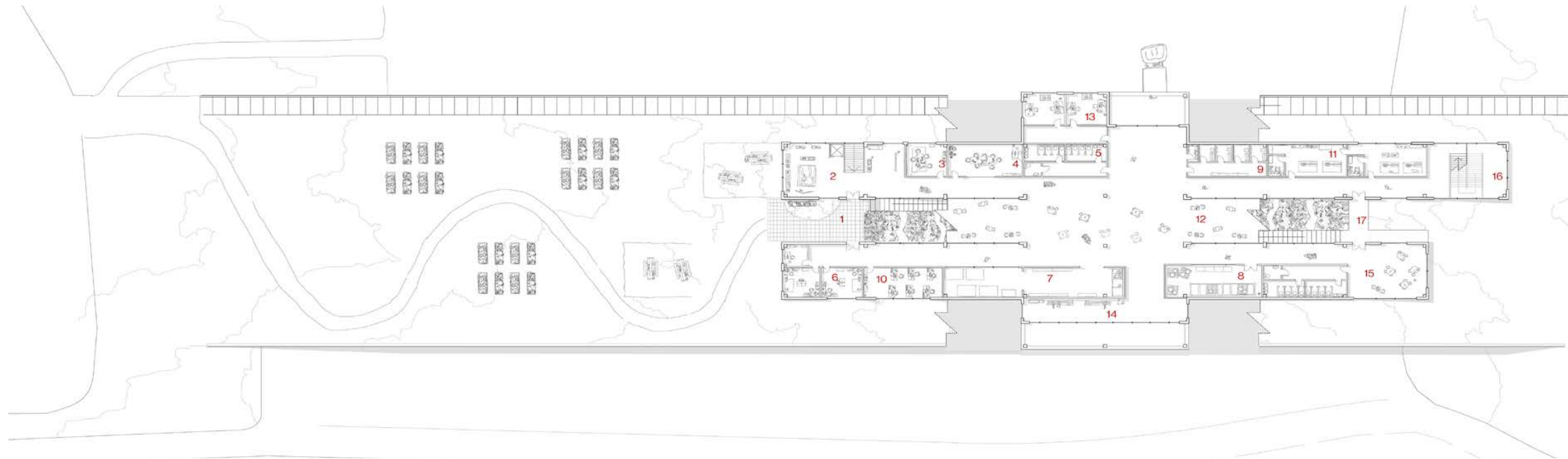
CORRESPONDING ELEVATION



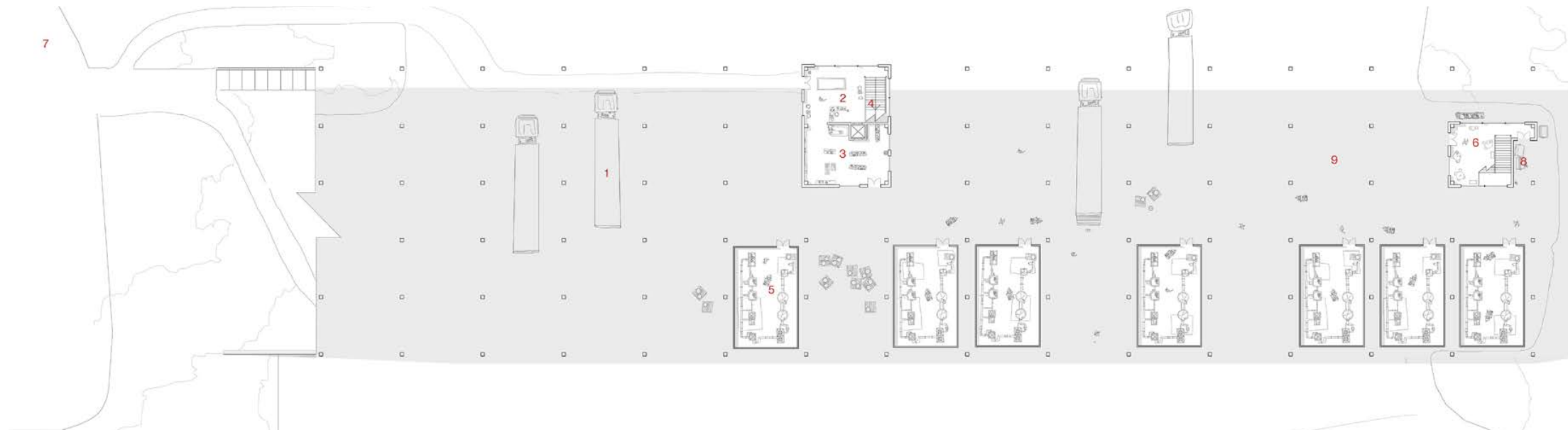
1. Car Park
2. Wheelchair friendly meandering ramp
3. Stepped walkway
4. Hillside allotments
5. Main hillside entry point
6. Roof level offices
7. Tomato farm
8. Skylight, overlooks mid level non-chemical storage
9. Stairs from hillside entry point
10. Outdoor seating area
11. Small exhibition space
12. Toilets
13. Coastal flora showcase
14. Outdoor crop farm
15. Playground
16. Vehicle and worker entry point
17. Public access road



1. Public entry point
2. DLE Process education space
3. Admin office
4. Meeting room
5. Toilets
6. DLE admin offices
7. Non-chemical storage
8. Chemical storage
9. Changing rooms
10. Lithium monitoring office
11. Metal and wood workshops
12. Mixed use social space
13. General offices
14. Balcony with views
15. Private worker breakout space
16. Worker ground level entry point
17. Worker ramp level entry point

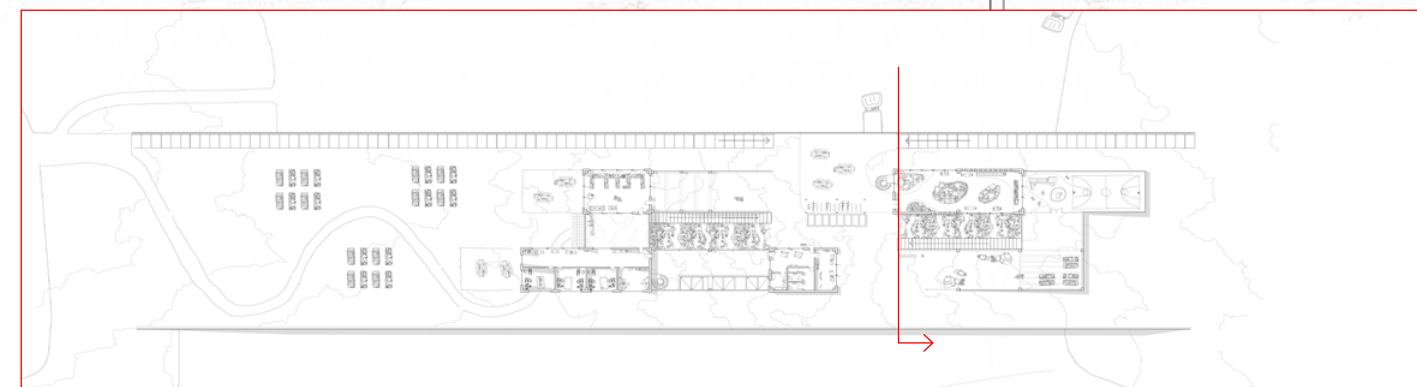


1. Truck bay area
2. Visitor and general public reception
3. Shop
4. Admin floor access
5. Lithium modules
6. Worker reception and seating
7. Public parking
8. Waste Collection
9. Loading and unloading space





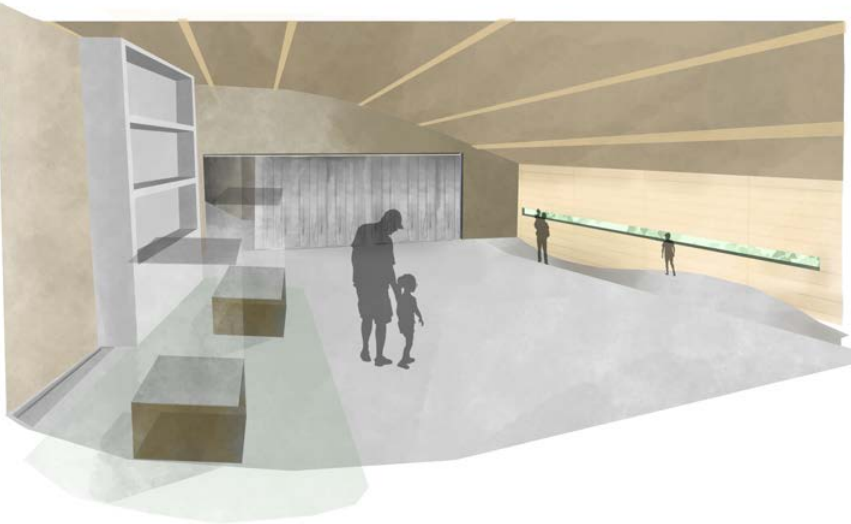
The lithium units themselves are a simple timber framework , covered with plywood sheets and are uninsulated and temporary, with machinery added with relative ease.. There is a clear heirarchy between industry, admin and social spaces.



Initial site painting, carried out as part of a texture and materiality exploration.



2.



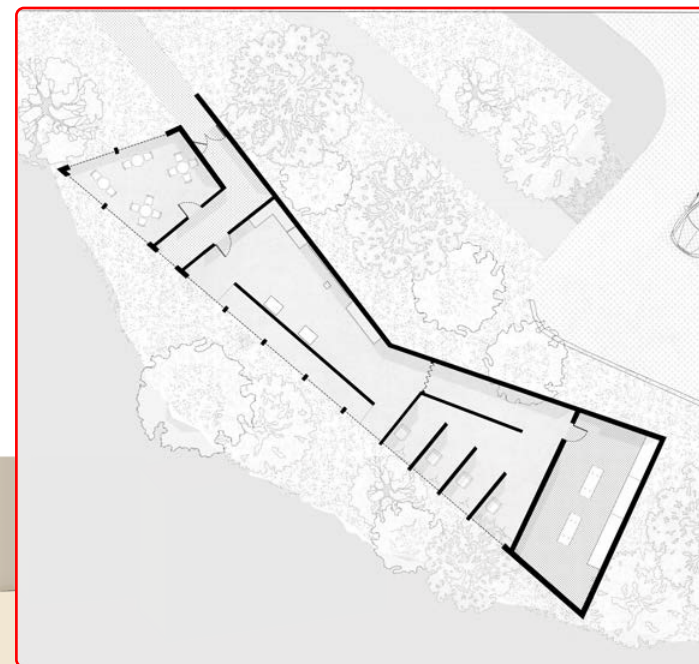
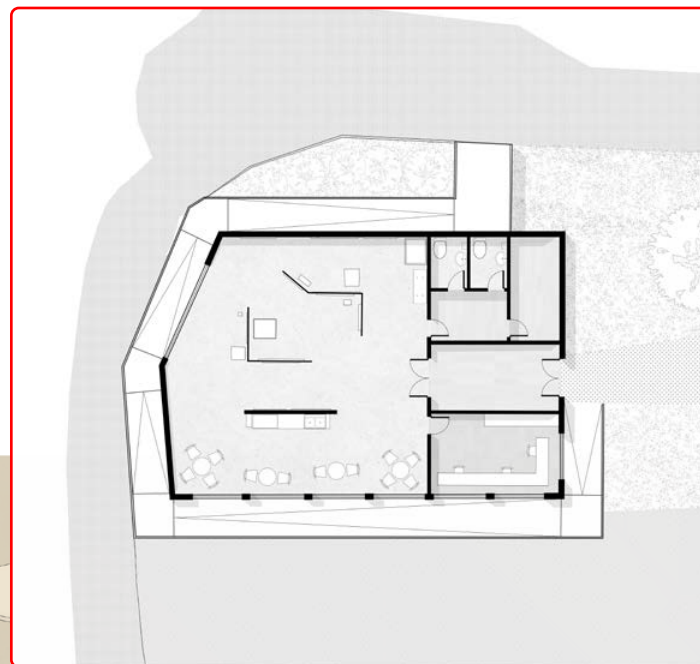
Interior mock-ups of the bird hide and nest spaces

studio 2:

WATCHING AND WAITING

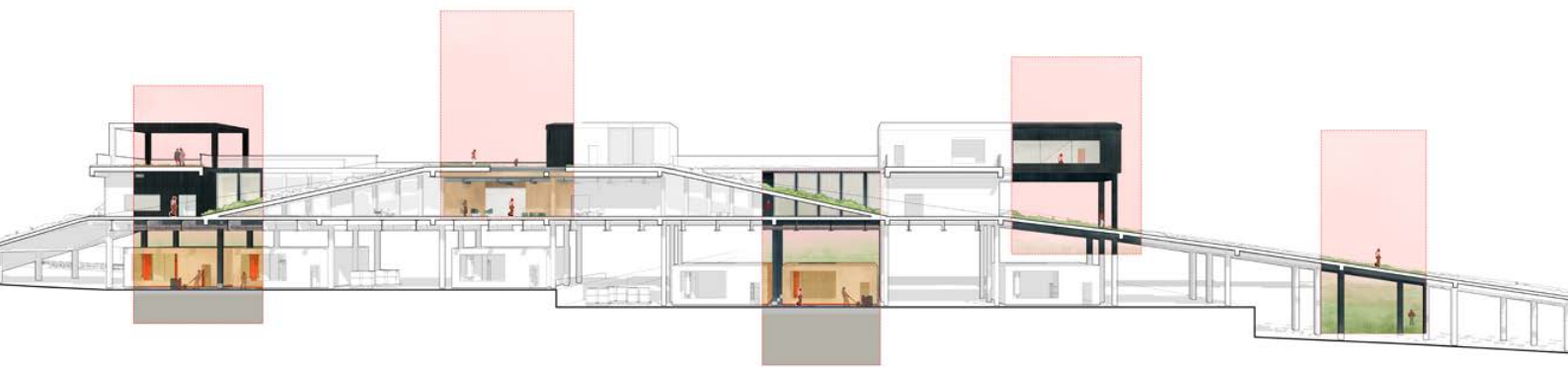
My final studio project of second year centred around the design for a flexible public facility by the river Goyt in Stockport. It was a multi-faceted project which required me to think about including a range of facilities, including an outdoor promenade, an office space, and an exhibition room for up to 50 people. This culminated in a two-unit proposal, which I centred around the pastime of birdwatching, with stealth, subtlety and community being key design drivers. The bird hide was to be a floodable sunken space, using gabion retaining walls and offering secret views over the river.





BIOTIC THRESHOLDS

The proposal blurs the boundaries between human space and wildlife habitat, creating a landscape where people and birds can coexist without intrusion. Central to this idea is the notion of watching without being watched, embodied in a partially subterranean bird hide, its presence softened by trees as it sits quietly along the riverside. Across the site, features encourage bird life: small ponds provide habitat and water, while discreet perching points and flagpoled wires create safer resting and viewing opportunities. These subtle interventions enrich the environment without overwhelming it. Accessibility is a key priority. The gentle 1:20 slope from the site entrance to the raised "nest," and then down to the bird hide, follows UK building regulations, ensuring the experience is fully inclusive for wheelchair users. In this way, the project balances ecological richness with thoughtful design for all visitors.



**Thank you for taking the time
to read my sample portfolio.**

LinkedIn: www.linkedin.com/in/omer-ibrahim-archi

Website: www.omer-ibrahim.webnode.co.uk

Email: omeribrahim5419@gmail.com

